

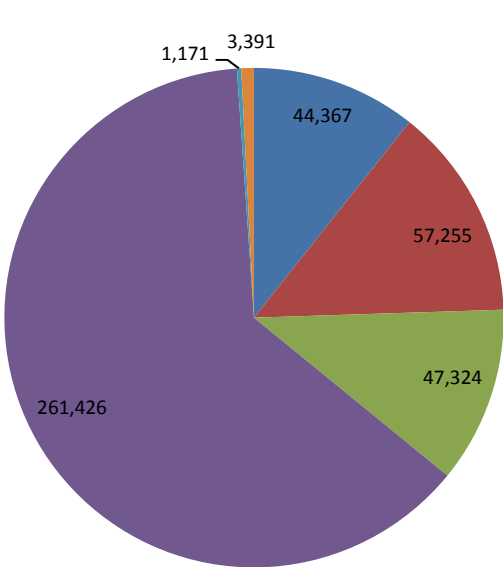


KanCare Executive Summary
Committee on HCBS and KanCare Oversight
(Data reported through November 2017)
February 16th, 2018

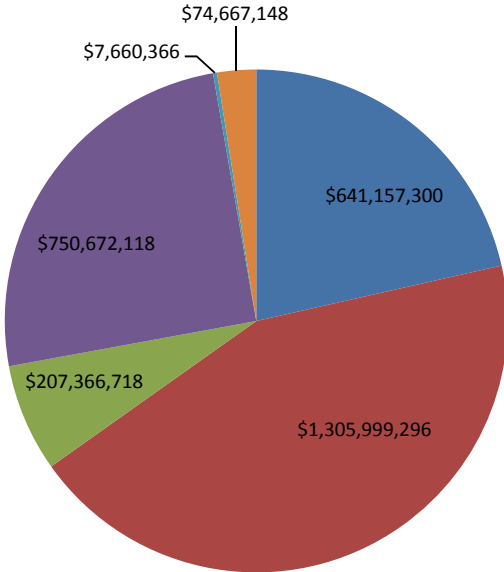
Medicaid/CHIP Member Eligibility and Expenditures

Calendar Year 2017 (January - November)

Eligibility Composition



Expenditure Composition

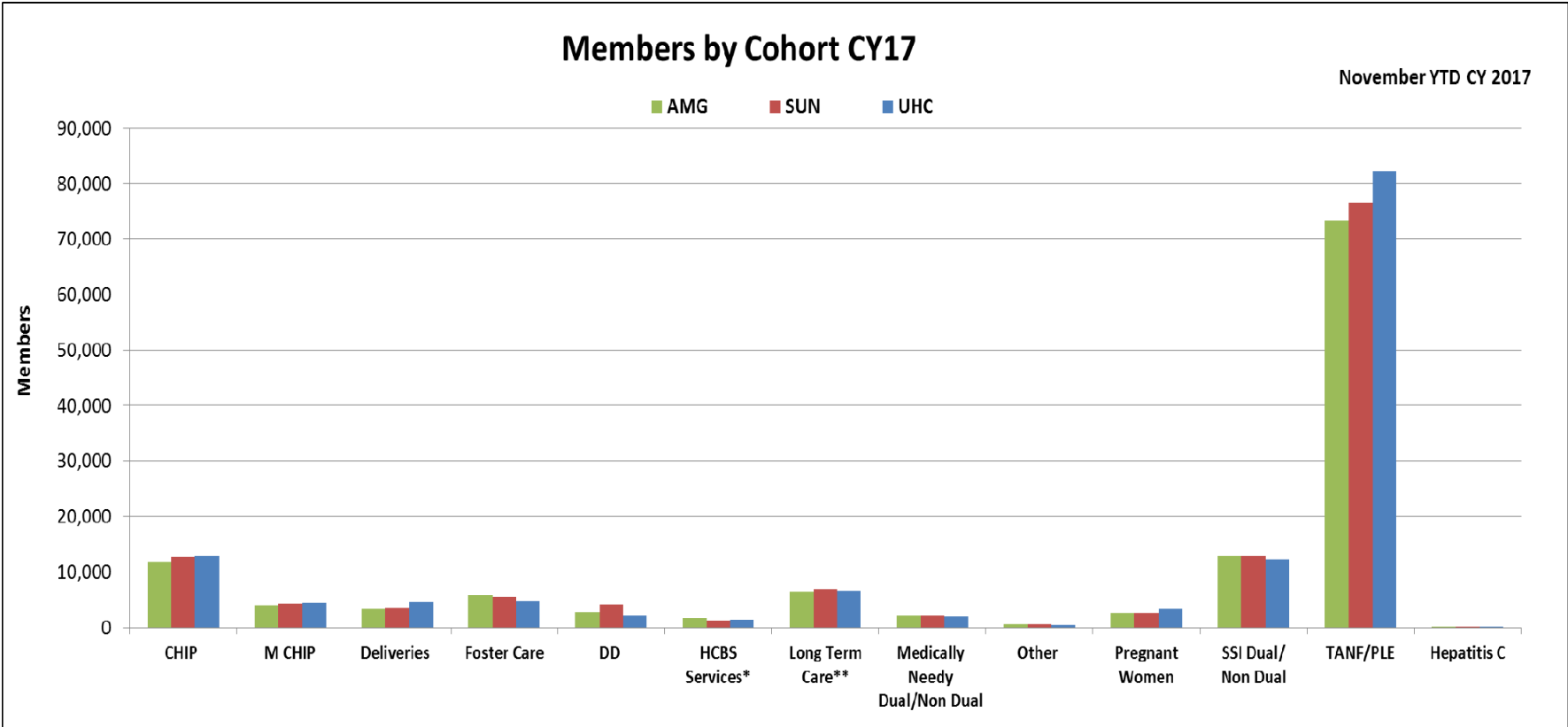


Population	% Total	
	Population	Expenditures
Elderly	10.69%	21.46%
Disabilities	13.80%	43.72%
Parents/Caregivers	11.41%	6.94%
Children	63.00%	25.13%
MediKan	0.28%	0.26%
Other	0.82%	2.50%
Total	100.00%	100.00%

■ Elderly
 ■ Children
 ■ MediKan
 ■ Individuals with Disabilities
 ■ Parents/Caretakers
 ■ Other



KanCare Executive Financial Summary

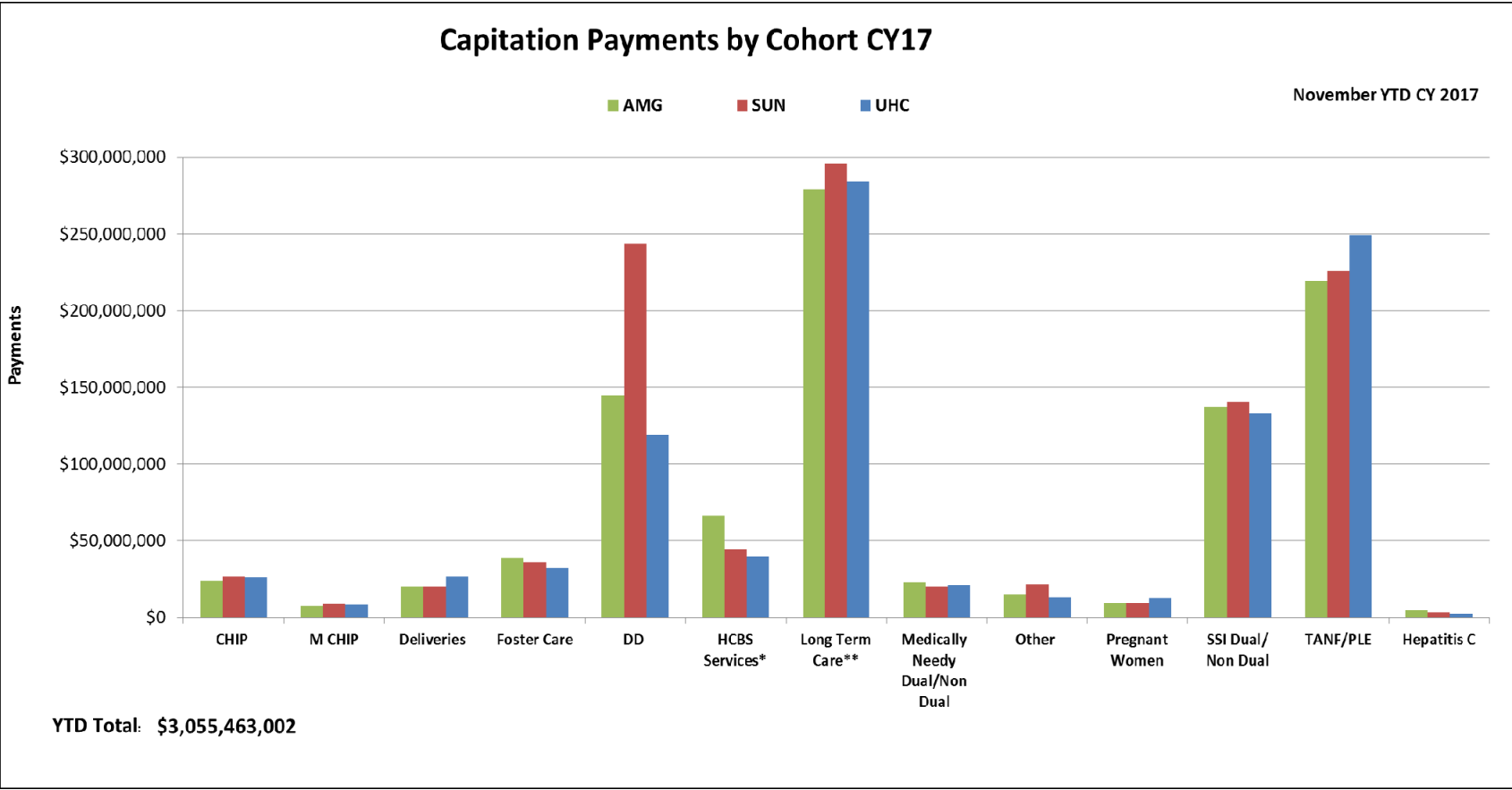


*HCBS Services includes Autism, Severe Emotional Disturbance, Technology Assisted, and Traumatic Brain Injury

**Long Term Care includes Nursing Facilities, Money Follows the Person Frail Elderly and Physically Disabled, and the Physically Disabled and Frail Elderly Waivers



KanCare Executive Financial Summary



*HCBS Services includes Autism, Severe Emotional Disturbance, Technology Assisted, and Traumatic Brain Injury

**Long Term Care includes Nursing Facilities, Money Follows the Person Frail Elderly and Physically Disabled, and the Physically Disabled and Frail Elderly Waivers



Provider Network

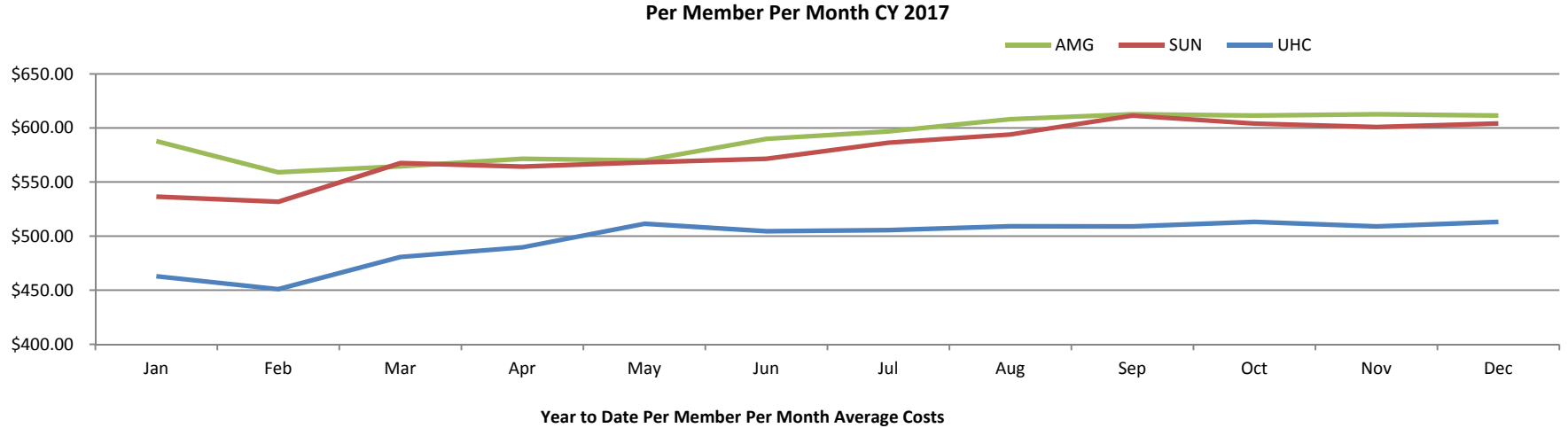
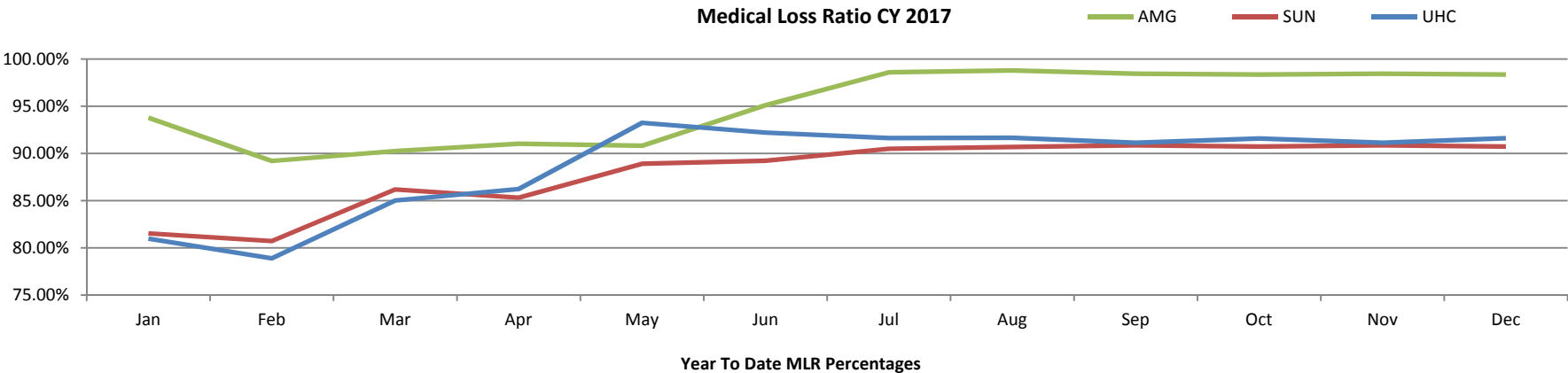
KanCare MCO	# of Unique Providers as of 3/31/17	# of Unique Providers as of 6/30/17	# of Unique Providers as of 9/30/17	# of Unique Providers as of 12/31/17
Amerigroup	16,498/23,758*	25,904*	25,396*	27,107*
Sunflower	22,313/30,992*	31,780*	31,506*	31,168*
UHC	23,777/39,881*	32,216*	30,610*	31,247*

*Reflects the revised provider pull to reflect the number of unique providers per name, NPI and city .

NOTES:

Q1 2017, we have revised the provider pull to reflect the number of unique providers per name, NPI and city. Previously, we indicated unique providers by name and NPI, eliminating multiple records for providers who served in more than one city. Since Kansas is a highly rural state with many providers serving in multiple clinic locales, we felt a revision of this report would be a more accurate reflection of network capacity. The old method of calculation is listed first, then the new way.

Medical Loss Ratio & Per Member Per Month



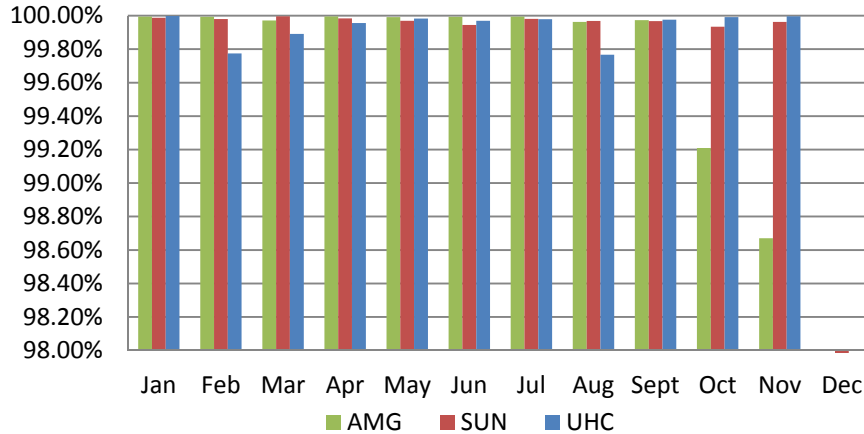
PMPM= Current Expenditures/ Current Members/12 months

MLR=Total Claims Paid/Capitations

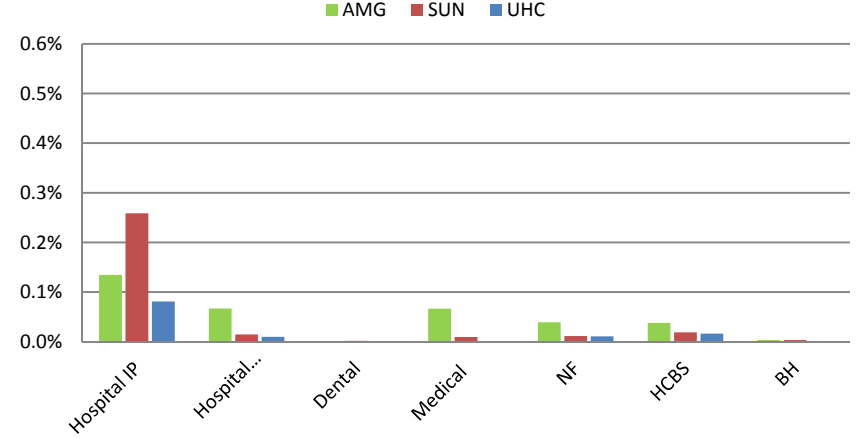


Claims Data

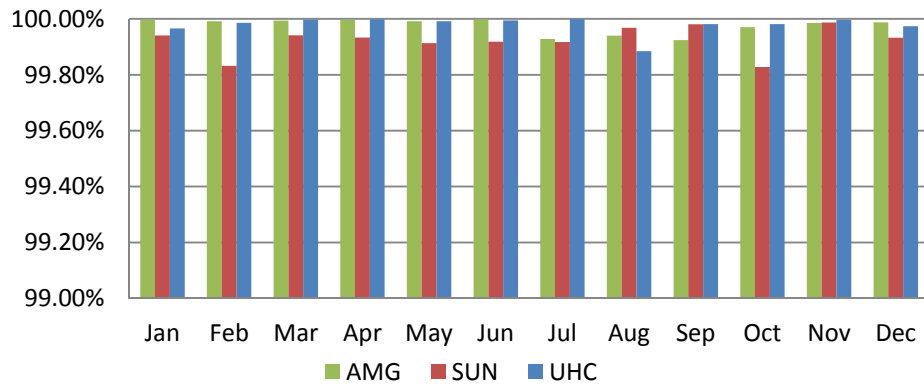
% Claims Processed Within 30 days CY 2017



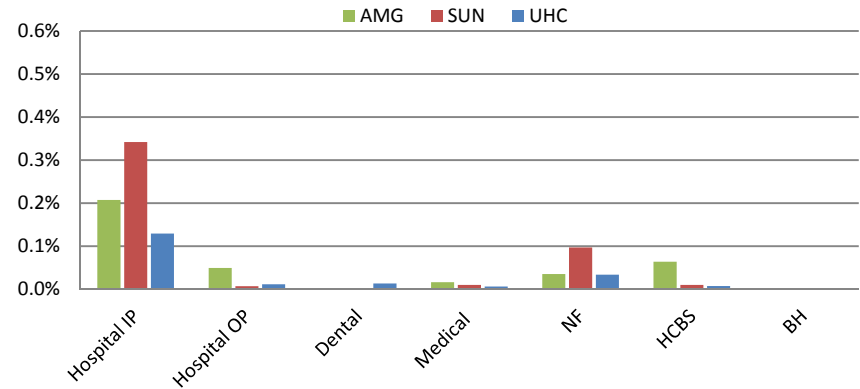
% YTD Claims Adjusted. >3 times CY17 (Jan-Dec)



% Clean Claims Processed Within 30 days CY 2016

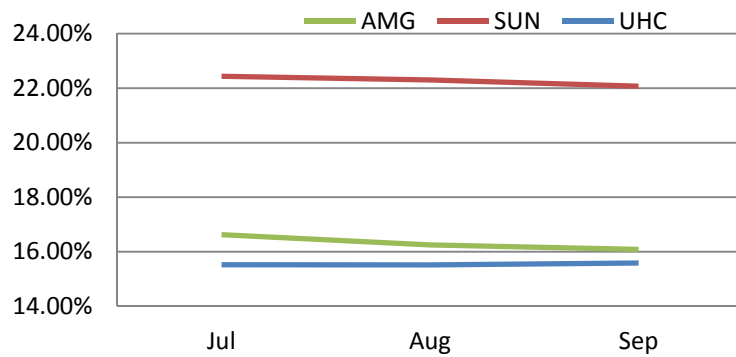


% YTD Claims Adjusted. >3 times Jan- Dec CY16

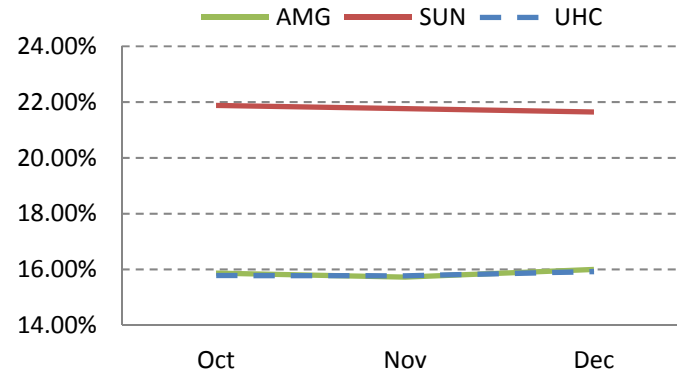


Claims Data

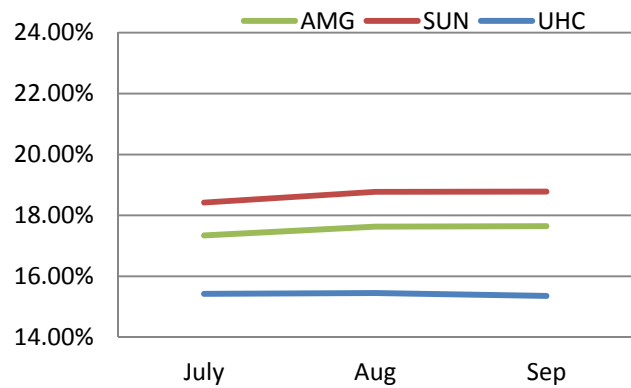
% Denied Claims by Month Q3 2017



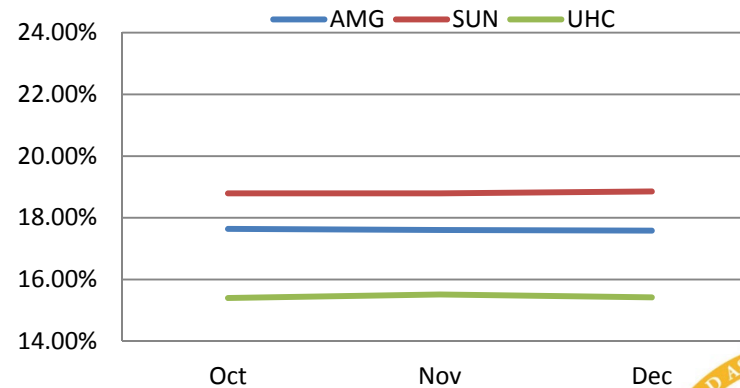
% Denied Claims by Month Q4 2017



% Denied Claims by Month Q3 2016

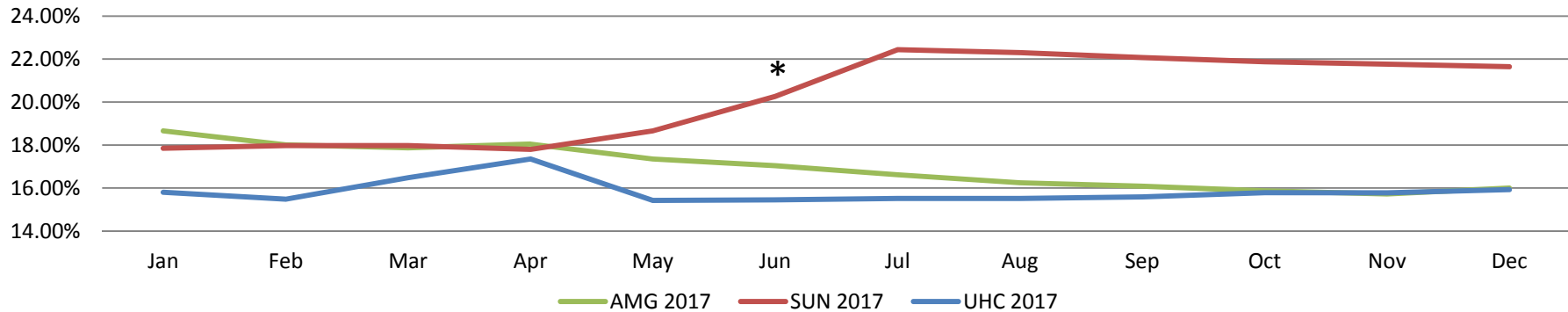


% Denied Claims by Month Q4 2016



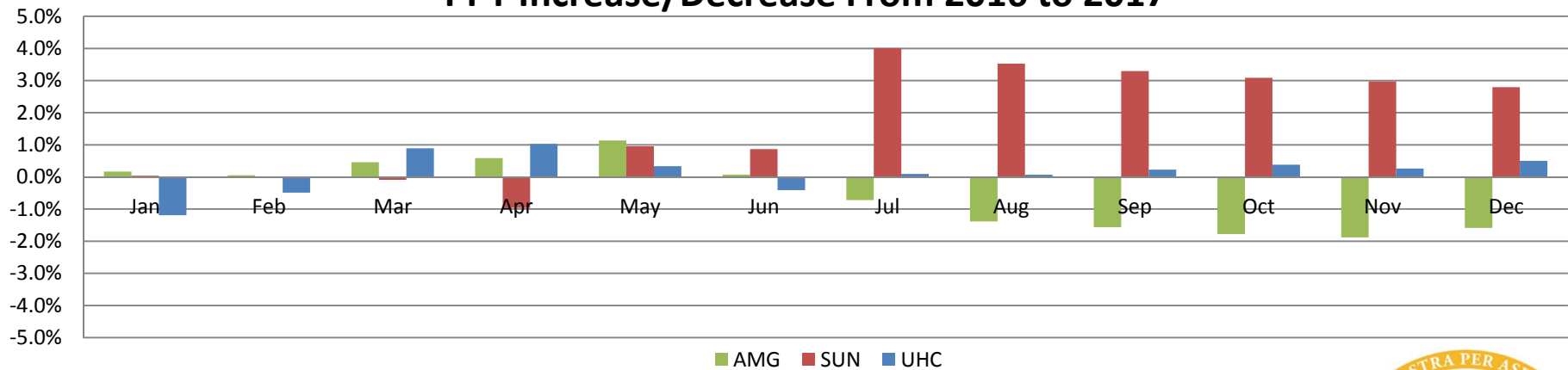
Claims Data

Percent Denied Claims by Month YTD Cumulative 2017



*SUN- changed Pharmacy Benefit Management contractor as of 6-1-17 resulting in increase denial.

PPT Increase/Decrease From 2016 to 2017



Value Added Services - January- December 2017

	Amerigroup			Sunflower	Sunflower			United	United		
	Members YTD	Total Units YTD	Total Value YTD		Members YTD	Total Units YTD	Total Value YTD		Members YTD	Total Units YTD	Total Value YTD
Adult Dental Care	3,315	4,105	\$ 508,242	CentAccount debit card	77,198	77,198	\$ 827,461	Rewards for Preventive Visits or Health Actions	45,532	45,532	\$ 127,324
Member Incentive Program	8,554	20,284	\$ 401,965	Dental visits for adults	4,819	7,260	\$ 363,352	Adult Dental Services	2,148	2,148	\$ 124,672
Mail Order OTC	1,301	8,152	\$ 148,404	Pharmacy Consultation	6,513	9,766	\$ 232,764	Home Helper Catalog Supplies	2,977	2,977	\$ 97,833
Healthy Families Program	42	42	\$ 75,000	Smoking cessation program	681	681	\$ 163,440	Baby Blocks Program and Rewards	805	805	\$ 96,600
Pest Control	137	166	\$ 23,918	Healthy Solutions for Life - Disease Management	49,842	49,842	\$ 99,684	Adult Briefs	915	915	\$ 84,341
Additional Respite Care for DD Waiver Population	25	296	\$ 16,690	Start Smart	2,699	2,699	\$ 75,977	Additional Vision Services	1,921	2,324	\$ 83,979
Member Transportation to Community Locations	57	252	\$ 14,067	Member Connections Home Visiting Program	2,450	2,450	\$ 62,552	Adult Dentures	140	140	\$ 73,382
Boys and Girls Club Membership	158	160	\$ 8,000	Lodging for specialty and inpatient care	47	310	\$ 25,110	Membership to Youth Organizations	685	685	\$ 34,250
Smoking Cessation Program	38	41	\$ 6,444	Respite care	66	4,694	\$ 15,256	Weight Watchers - Free Classes	181	181	\$ 21,539
Air purifier with a permanent filter	34	34	\$ 3,086	Farmers Market Vouchers	1,365	1,365	\$ 13,650	Additional Podiatry Visits	167	167	\$ 21,250
Weight Watcher Vouchers	38	35	\$ 1,291	Frail & Elderly incontinence supplies	306	1,579	\$ 10,802	Pest Control	35	35	\$ 8,500
Additional Personal Care Services for IDD Wavier Population	7	488	\$ 1,288	SafeLink®/Connections Plus cell phones	198	198	\$ 9,470	KidsHealth	12,000	12,000	\$ 7,000
Respite Care for FE Waiver Population	1	102	\$ 306	Community Programs for Healthy Children: Boys & Girls Clubs	543	543	\$ 8,145	Medications Calendar	1,661	1,661	\$ 5,064
				Healthy Solutions for Life - Weight Management Program	1,118	1,118	\$ 2,236	A is for Asthma	1,147	1,147	\$ 574
				Meals for specialty and inpatient care	19	60	\$ 1,500	Follow-Up After Behavioral Health Hospitalization - \$25 Reward	18	18	\$ 450
				Hospital companion	6	336	\$ 1,092	Sesame Street - Food For Thought	11	11	\$ 385
				Healthy Schools & Adopt-A-School Program	100	1	\$ 225	Adults Parks and Rec Catalog	5	5	\$ 250
Grand Total	13,723	34,157	\$ 1,208,701	Grand Total	147,970	160,100	\$ 1,912,716	GRAND TOTAL	70,348	70,751	\$ 787,393
2017 KanCare Totals	232,041	265,008	\$ 3,908,810								

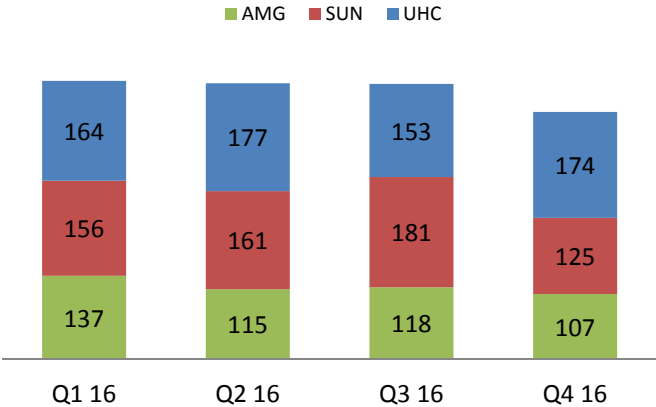
In Lieu of Services

Amerigroup	Unduplicated Members	Value of Services Avoided	Sunflower	Unduplicated Members	Value of Services Avoided	United	Unduplicated Members	Value of Services Avoided
Additional Medicaid covered services, beyond existing limitations, including personal care services, sleep cycle support, home modifications, equipment and assisted services ... in lieu of members needing to be admitted to an acute care hospital or nursing facility	160	\$3,814,043	Additional personal care services, beyond existing waiver limitations ... in lieu of members needing to be admitted to a nursing facility	161	\$2,460,914	Additional personal care services, personal care services, beyond existing waiver limitation, sleep cycle support, and home delivered meals ... in lieu of members needing to be admitted to a nursing facility	596	\$7,174,000
Non-Covered services including private nurse, PET scans, CPAP equipment and sleep cycle support in lieu of members needing to access ICU, acute hospital, or nursing facility services	224	\$5,696,492	Non-Covered services covering a wide range of equipment, orthotics, testing, physician services and outpatient surgery in lieu of members needing to access acute hospital, home health, or more intensive physical or behavioral health services	87	\$260,137.00	Non-Covered services Sleep studies, testing, and home health in lieu of members needing to access to acute hospital, or nursing facility services	107	\$1,,476,000
Totals	384	\$9,510,536	Totals	248	\$2,721,051	Totals	703	\$8,650,000

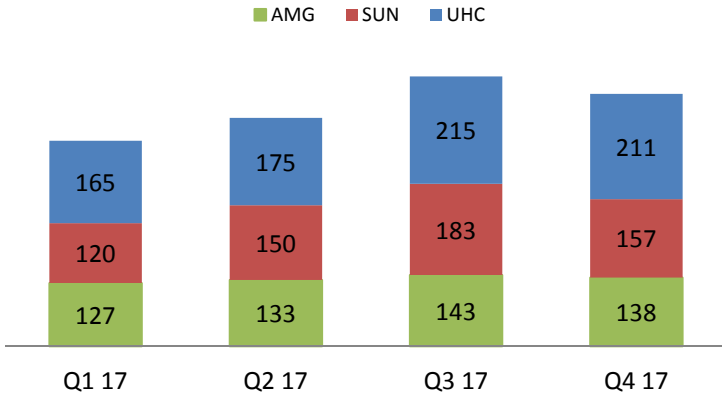
KANCARE TOTAL	(January - December 2017)
Members	1,335
Value of Services Avoided	\$20,881,587

Grievances and Appeals Received- Members

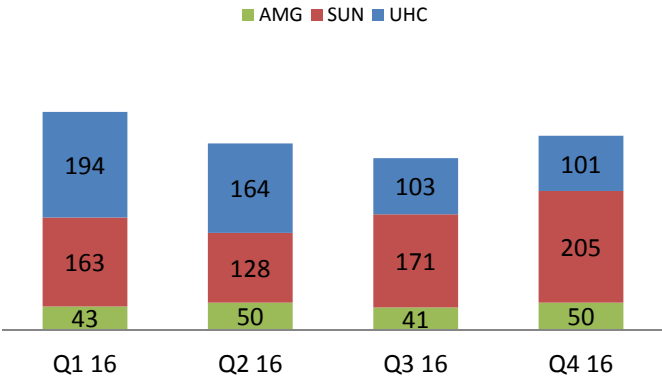
Member Grievances 2016



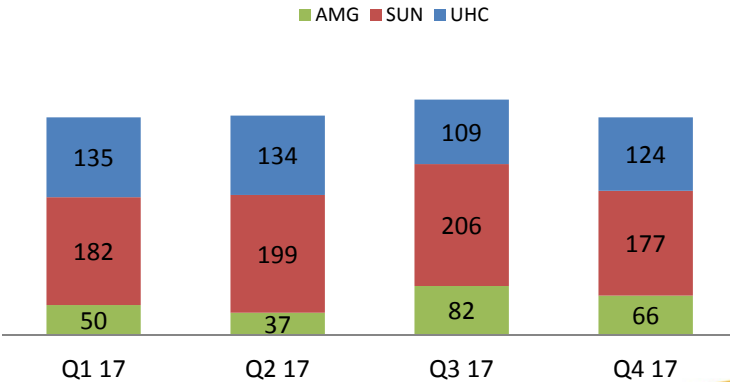
Member Grievances 2017



Member Appeals 2016

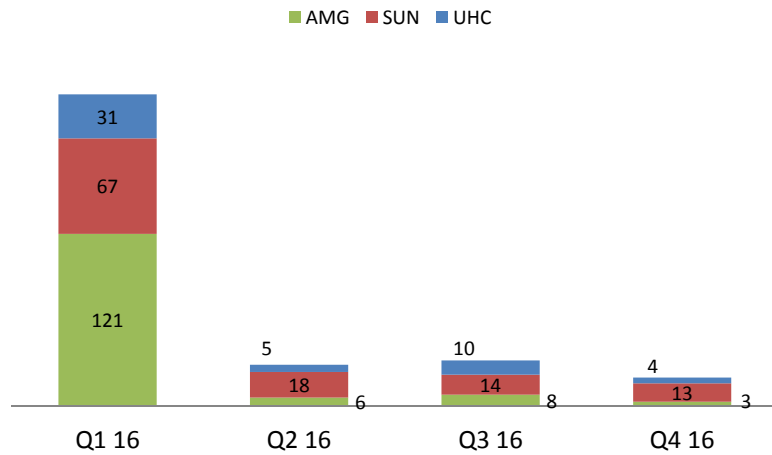


Member Appeals 2017



State Fair Hearing Received - Members

Member State Fair Hearings 2016



Member State Fair Hearings 2017

