



# **KanCare Update to Bob Bethell Joint Committee on HCBS and KanCare Oversight**

**(Data reported through June 2017)**

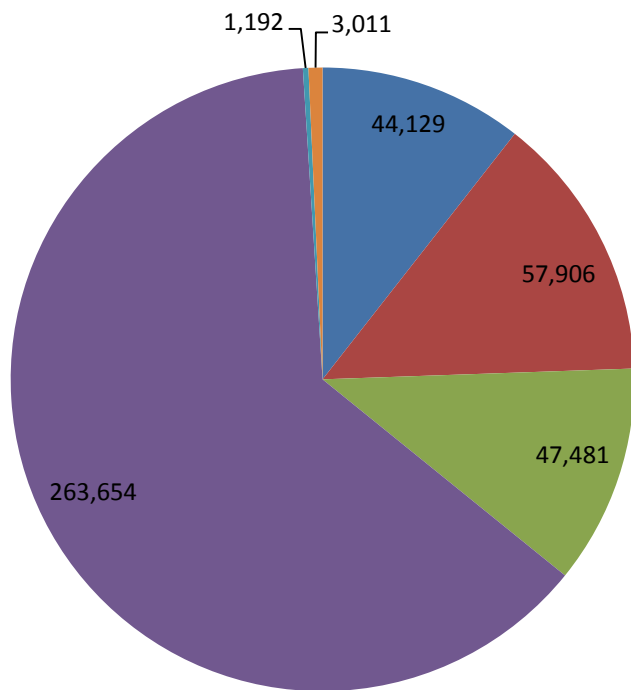
**August 22, 2017**

---

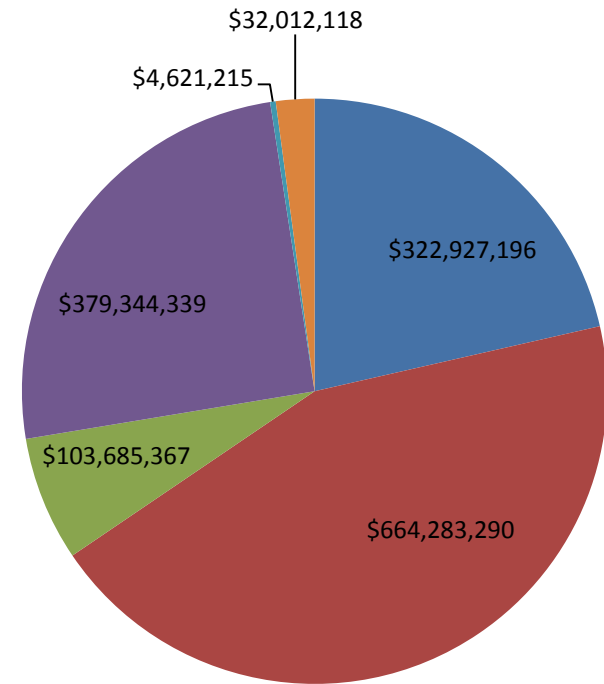
# Medicaid/CHIP Member Eligibility and Expenditures

## Calendar Year 2017 (January - June)

Eligibility Composition



Expenditure Composition



- Elderly
- Parents/Caretakers
- MediKan

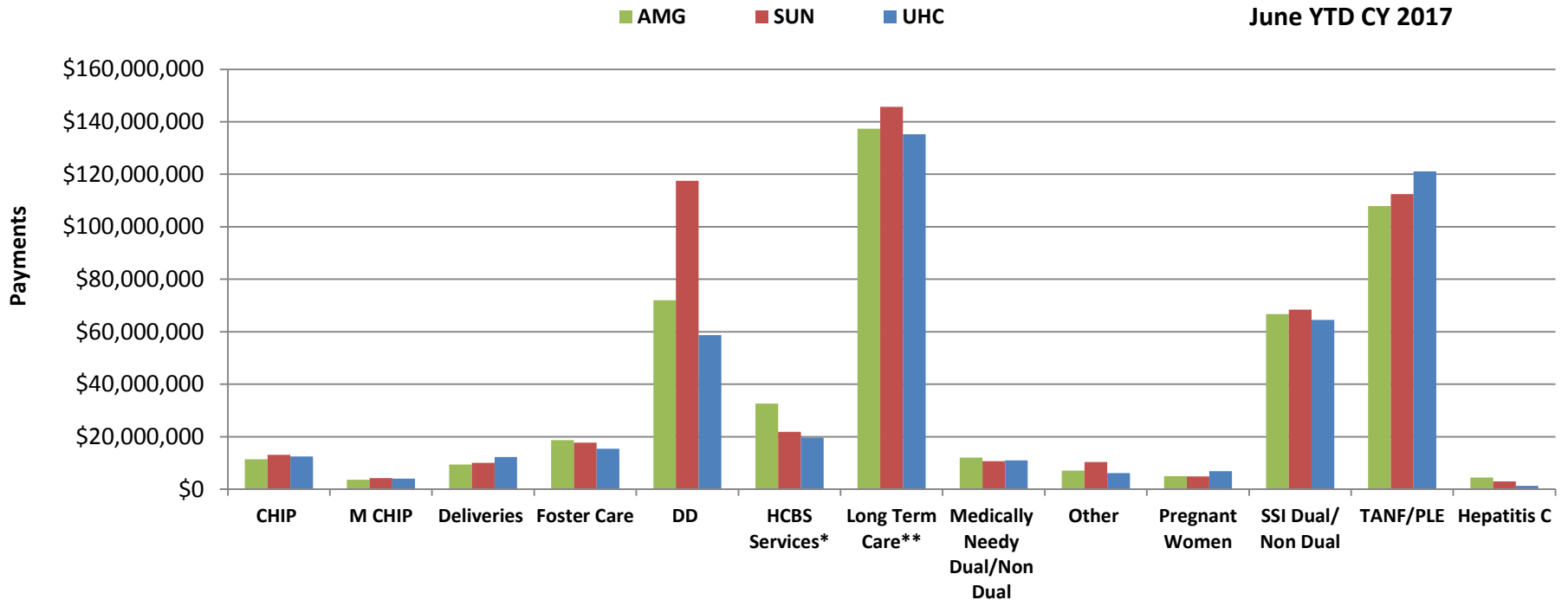
- Individuals with Disabilities
- Children
- Other

- Elderly
- Parents/Caretakers
- MediKan

- Individuals with Disabilities
- Children
- Other

# KanCare Executive Financial Summary CY17

## Capitation Payments by Cohort CY17



**YTD Total: \$1,497,715,228**

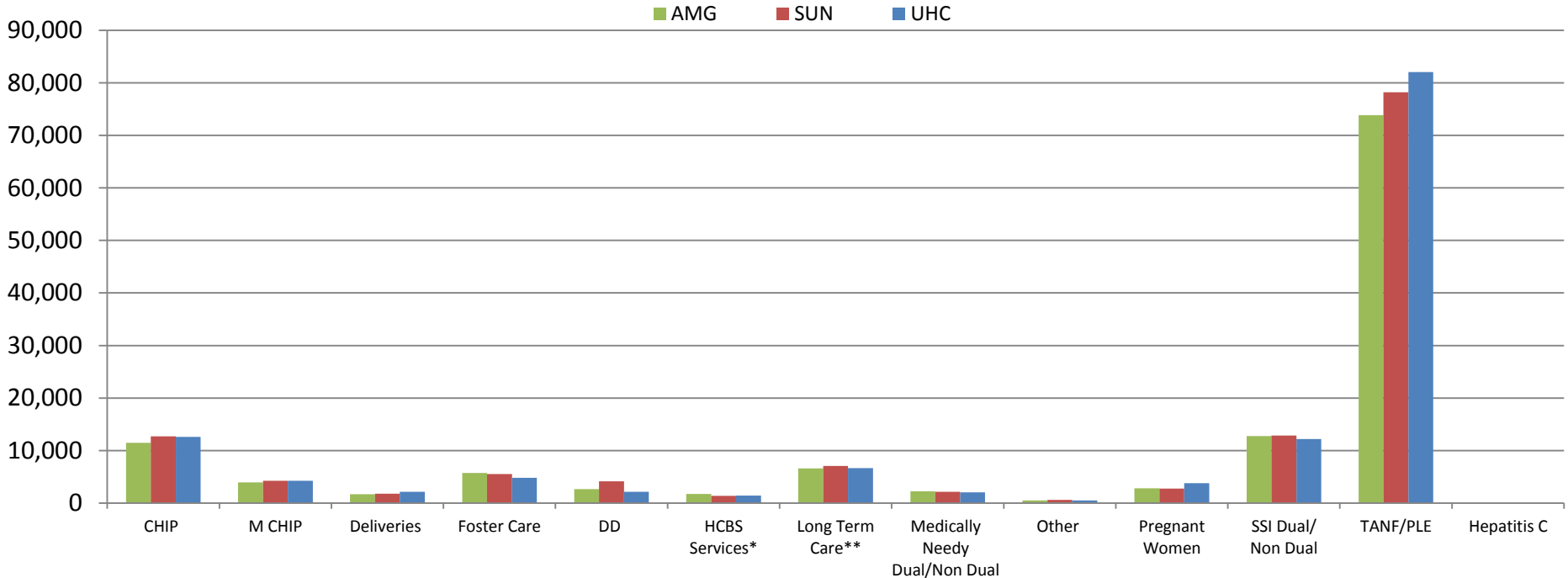
\*HCBS Services includes Autism, Severe Emotional Disturbance, Technology Assisted, and Traumatic Brain Injury

\*\*Long Term Care includes Nursing Facilities, Money Follows the Person Frail Elderly and Physically Disabled, and the Physically Disabled and Frail Elderly Waivers

# KanCare Executive Financial Summary CY17

## Members by Cohort CY17

June YTD CY 2017



\*HCBS Services includes Autism, Severe Emotional Disturbance, Technology Assisted, and Traumatic Brain Injury

\*\*Long Term Care includes Nursing Facilities, Money Follows the Person Frail Elderly and Physically Disabled, and the Physically Disabled and Frail Elderly Waivers

# Provider Network

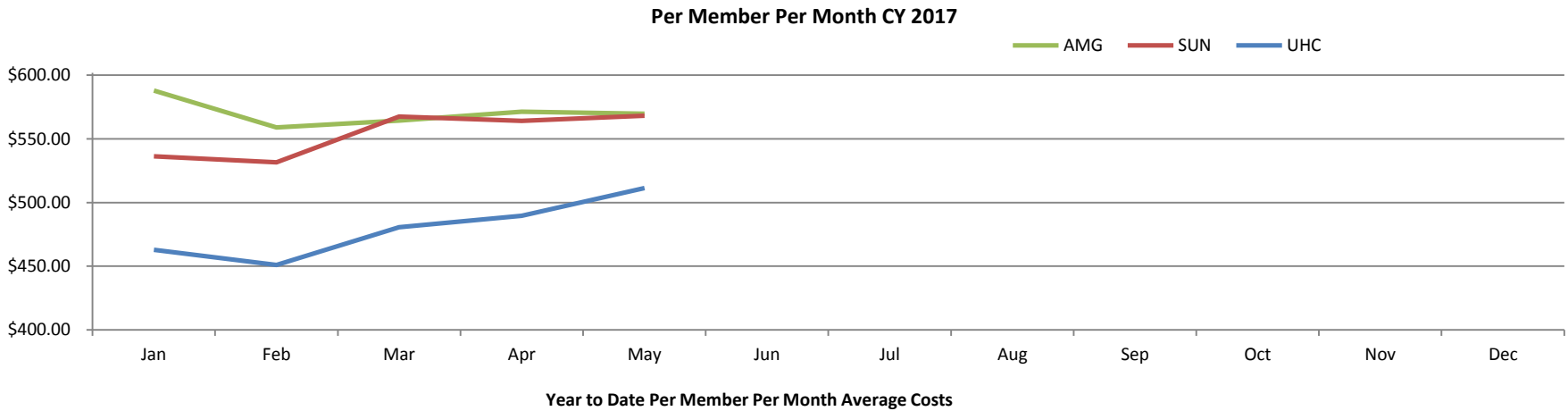
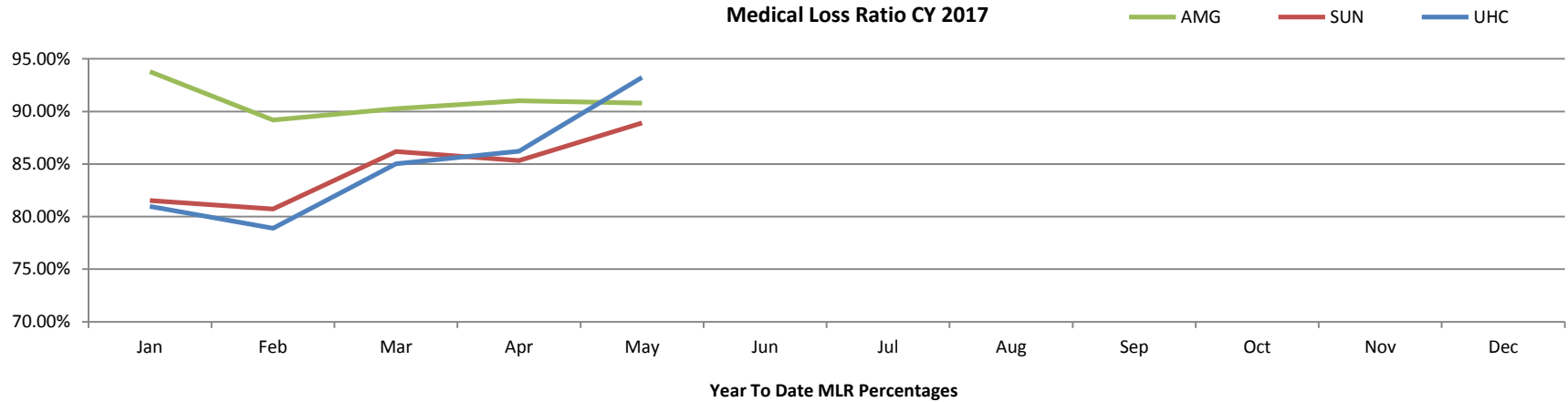
KanCare MCO	# of Unique Providers as of 9/30/16	# of Unique Providers as of 12/31/16	# of Unique Providers as of 3/31/17	# of Unique Providers as of 6/30/17
Amerigroup	16,623	16,886	16,498/23,758*	25,904*
Sunflower	20,734	21,391	22,313/30,992*	31,780*
UHC	24,321	23,778	23,777/39,881*	32,216*

\*Reflects the revised provider pull to reflect the number of unique providers per name, NPI and city .

**NOTES:**

Q1 2017, we have revised the provider pull to reflect the number of unique providers per name, NPI and city. Previously, we indicated unique providers by name and NPI, eliminating multiple records for providers who served in more than one city. Since Kansas is a highly rural state with many providers serving in multiple clinic locales, we felt a revision of this report would be a more accurate reflection of network capacity. The old method of calculation is listed first, then the new way.

# Medical Loss Ratio & Per Member Per Month



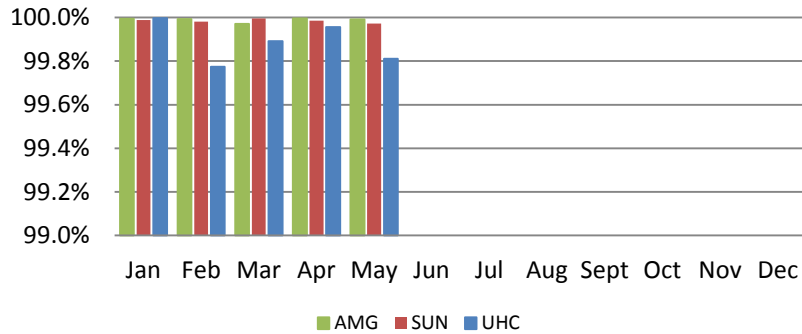
PMPM=Expenditures/ Members/ 12 Months

MLR=Total Claims Paid/ Capitations

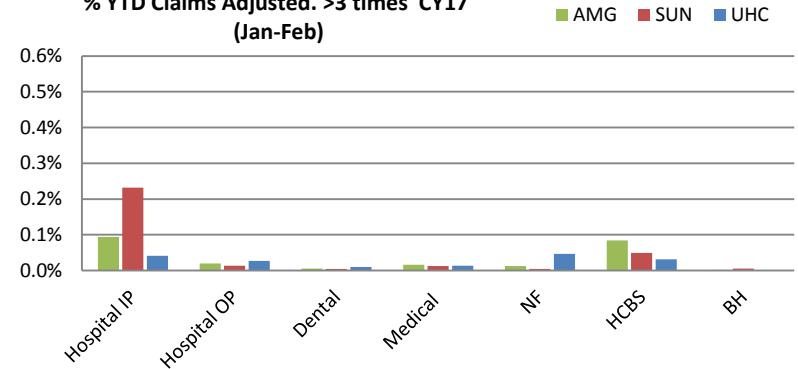


# Claims Data

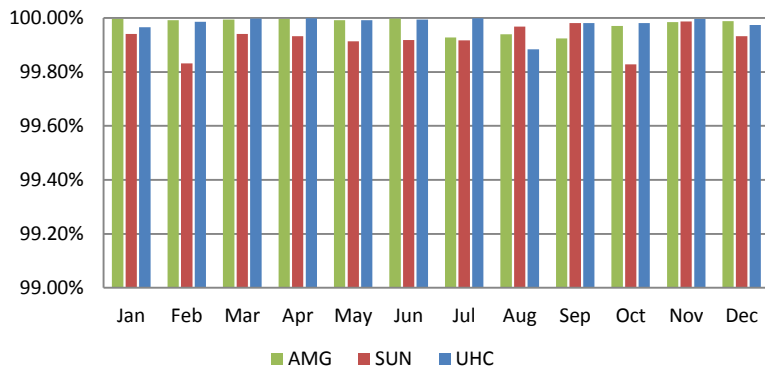
**% Clean Claims Processed within 30 days CY 2017**



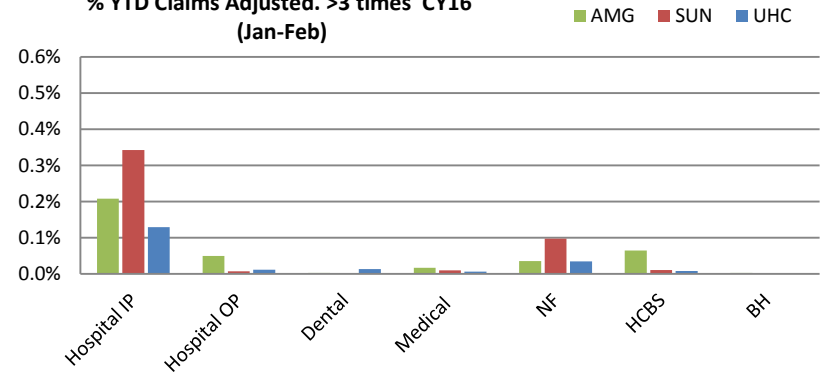
**% YTD Claims Adjusted. >3 times CY17 (Jan-Feb)**



**% Clean Claims Processed Within 30 days CY 2016**

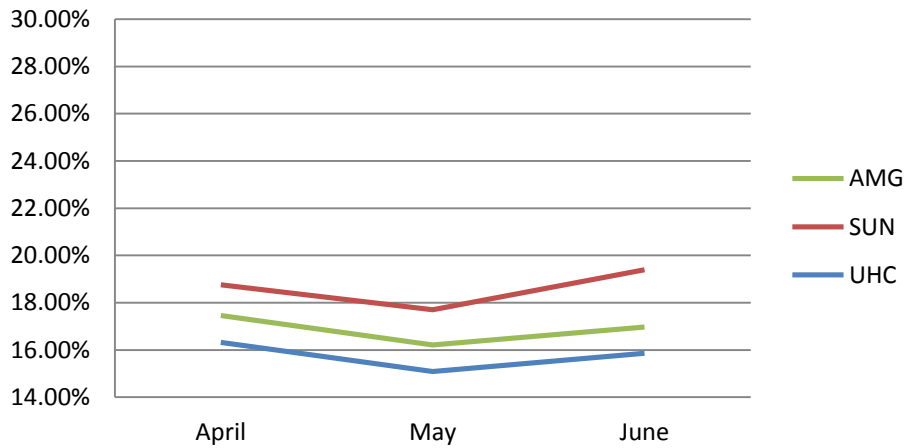


**% YTD Claims Adjusted. >3 times CY16 (Jan-Feb)**

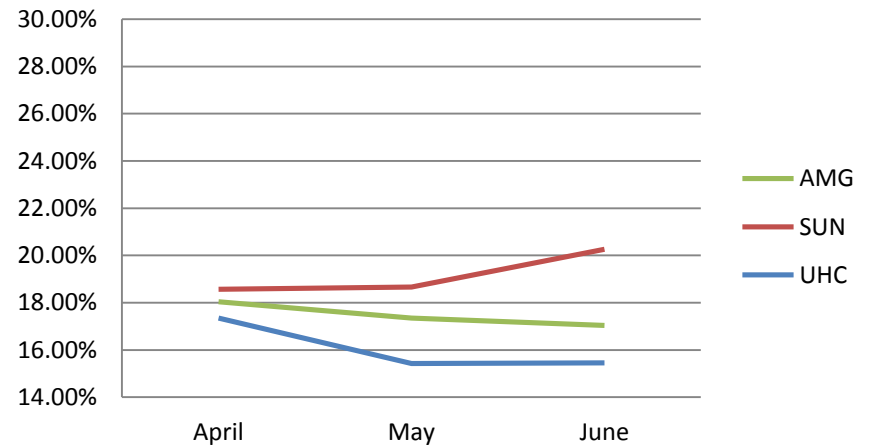


# Claims Data

### % Denied Claims by Month Q2 2016



### % Denied Claims by Month Q2 2017





# Value Added Services - January-June 2017

Amerigroup	Members YTD	Total Units YTD	Total Value YTD	Sunflower	Members YTD	Total Units YTD	Total Value YTD	United	Members YTD	Total Units YTD	Total Value YTD
Adult Dental Care	1,898	1,935	\$248,106	CentAccount debit card	36,204	36,204	\$390,339	Rewards for Preventive Visits & Health Actions	20,814	20,814	\$74,365
Member Incentive Program	5,211	10,423	\$198,495	Dental visits for adults	2,820	4,260	\$202,679	Adult Briefs	661	661	\$56,174
Mail Order OTC	1,065	3,955	\$71,576	Pharmacy Consultation	3,153	4,905	\$133,887	Adult Dental Services	1,008	1,008	\$55,660
Healthy Families Program	19	19	\$37,500	Smoking cessation program	286	286	\$68,640	Baby Blocks Program and Rewards	432	432	\$51,840
Member Transportation to Community Locations	57	252	\$14,067	Healthy Solutions for Life - Disease Management	25,271	25,271	\$50,542	Additional Vision Services	710	724	\$34,073
Pest Control	64	70	\$11,240	Start Smart	1,433	1,433	\$40,338	Home Helper Catalog Supplies	1,435	1,435	\$33,500
Additional Respite Care for DD Waiver Population	11	97	\$7,595	Member Connections Home Visiting Program	962	962	\$23,655	Adult Dentures	58	58	\$31,953
Smoking Cessation Program	25	27	\$4,134	Respite care	54	4,081	\$13,263	Membership to Youth Organizations	397	397	\$19,850
Boys and Girls Club Membership	65	65	\$3,250	SafeLink®/Connections Plus cell phones	187	187	\$8,944	Weight Watchers - Free Classes	120	120	\$14,280
Air purifier with a permanent filter	39	16	\$1,596	Frail & Elderly incontinence supplies	209	1,149	\$6,948	Additional Podiatry Visits	113	113	\$10,451
Weight Watcher Vouchers	20	20	\$738	Community Programs for Healthy Children: Boys & Girls Clubs	348	348	\$5,220	KidsHealth	12,000	12,000	\$7,000
				Farmers Market Vouchers	414	414	\$4,140	Medications Calendar	1,661	1,661	\$5,064
				Lodging for specialty and inpatient care	12	24	\$1,944	Pest Control	16	16	\$3,850
				Healthy Solutions for Life - Weight Management Program	552	552	\$1,104	Sesame Street - Food For Thought	10	10	\$350
				Hospital companion	5	272	\$884	A is for Asthma	594	594	\$297
				Meals for specialty and inpatient care	6	15	\$375	Follow-Up After Behavioral Health Hospitalization	10	10	\$250
								Adults Parks and Rec Catalog	5	5	\$250
<b>2017 YTD Grand Total</b>	<b>8,516</b>	<b>17,657</b>	<b>\$598,297</b>	<b>2017 YTD Grand Total</b>	<b>71,916</b>	<b>80,363</b>	<b>\$952,906</b>	<b>2017 YTD Grand Total</b>	<b>40,044</b>	<b>40,058</b>	<b>\$399,207</b>
<b>2017 KanCare Totals</b>	<b>120,476</b>	<b>138,078</b>	<b>\$1,950,410</b>								



# In Lieu of Services

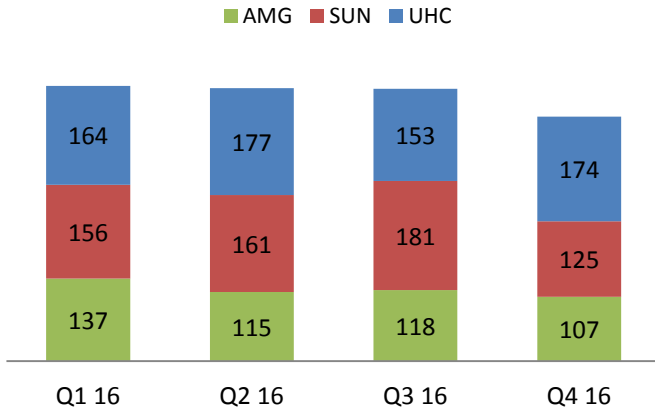
Amerigroup	Unduplicated Members*	Value of Services Avoided	Sunflower	Unduplicated Members*	Value of Services Avoided	United	Unduplicated Members*	Value of Services Avoided
Additional Medicaid covered services, beyond existing limitations, including personal care services, sleep cycle support, home modifications, equipment and assisted services ... in lieu of members needing to be admitted to an acute care hospital or nursing facility	84	\$468,637	Additional personal care services, beyond existing waiver limitations ... in lieu of members needing to be admitted to a nursing facility	66	\$131,691	Additional personal care services, personal care services, beyond existing waiver limitation, sleep cycle support, and home delivered meals ... in lieu of members needing to be admitted to a nursing facility	338	\$235,836
Non-Covered services including private nurse, PET scans, CPAP equipment and sleep cycle support in lieu of members needing to access ICU, acute hospital, or nursing facility services	113	\$386,552	Non-Covered services covering a wide range of equipment, orthotics, testing, physician services and outpatient surgery in lieu of members needing to access acute hospital, home health, or more intensive physical or behavioral health services	29	\$39,206	Non-Covered services Sleep studies, testing, and home health in lieu of members needing to access to acute hospital, or nursing facility services	50	\$299,167
Totals	197	\$855,189	Totals	95	\$170,897	Totals	388	\$535,003

<b>KANCARE TOTAL</b>	<b>(January - June 2017)</b>
<b>Members</b>	853
<b>Value of Services Avoided</b>	\$2,406,272

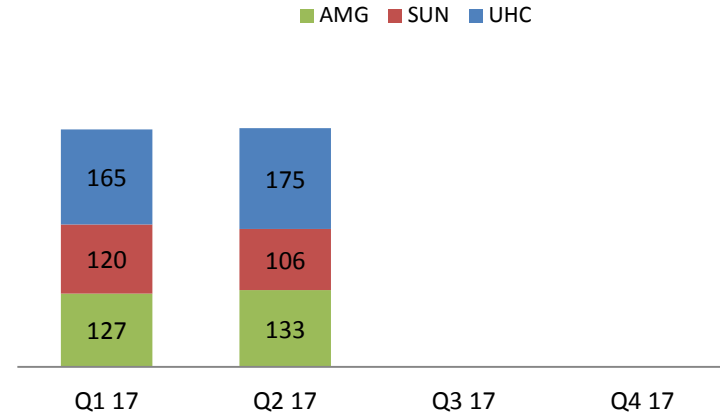


# Grievances and Appeals - Members

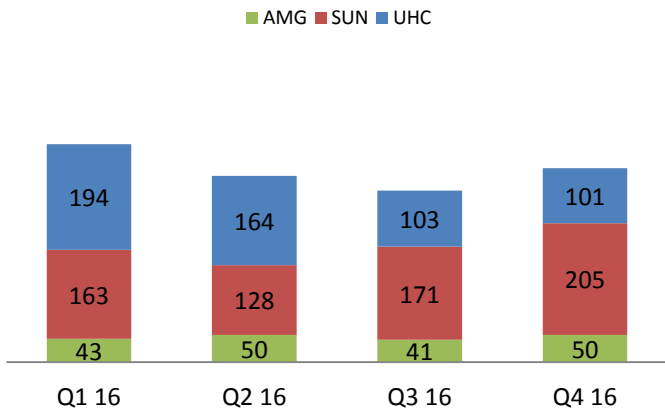
## Member Grievances 2016



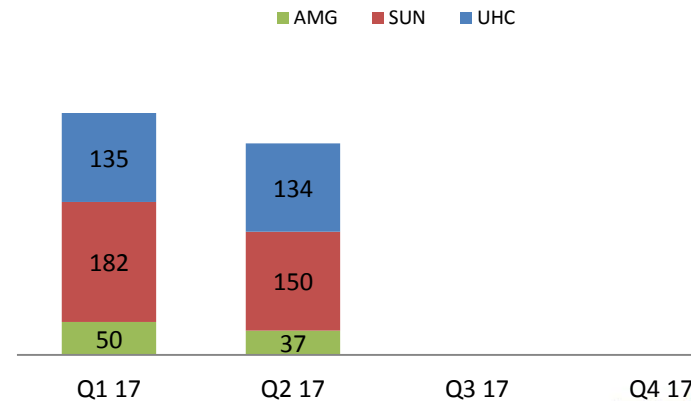
## Member Grievances CYTD 2017



## Member Appeals 2016

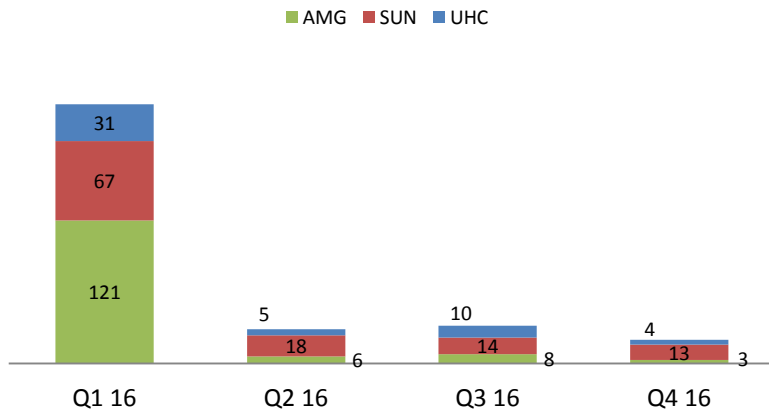


## Member Appeals CYTD 2017



# State Fair Hearing- Members

## Member State Fair Hearings 2016



## Member State Fair Hearings CYTD 2017

