



Working Healthy

» **Member Handbook** «
kancare.ks.gov/workinghealthy

Kansas Department of Health and Environment
Division of Health Care Finance
Working Healthy Program
900 SW Jackson, Suite 900N
Topeka, KS 66612

Kansas Department of Health and Environment
Division of Health Care Finance
Working Healthy Program
900 SW Jackson, Suite 900N
Topeka, KS 66612

WORK forms and more information are
available online at:
kancare.ks.gov/workinghealthy

» Contents

WHAT IS WORKING HEALTHY?	3
WHAT KIND OF HELP DOES WORKING HEALTHY GIVE?	4
CAN I GET WORKING HEALTHY?	4-5
WHAT IF I AM ON THE WAITING LIST FOR AN HCBS WAIVER?	5-6
HOW DOES WORKING HEALTHY AFFECT OTHER PROGRAMS, LIKE MEDICARE?	6-7
HOW DO I GET WORKING HEALTHY?	7
WHAT ARE PREMIUMS?	8
WHAT IF I LOSE MY JOB?	9
WHO DO I CONTACT IF I HAVE QUESTIONS?	10
WHAT ARE MY RIGHTS?	11
WHAT ARE MY RESPONSIBILITIES?	12-13
WHO CAN HELP ME AND ANSWER QUESTIONS ABOUT WORKING HEALTHY?	14-15

» What Is Working Healthy?

- Any Kansan with a disability and a paying job can apply for Working Healthy and live more independently. Working Healthy lets you have a job, earn and save more money, and keep KanCare. You get health care through KanCare and may pay a small monthly premium for KanCare (see “What are Premiums?” section).



» What kind of help does Working Healthy give?

- You get health care through KanCare (also known as Kansas Medicaid).



» Can I get Working Healthy?

- You need to be between 16 and 64 years old.
- You must have a disability that the government recognizes (Social Security).
- You need to have a job that pays \$65.01 per month or more.

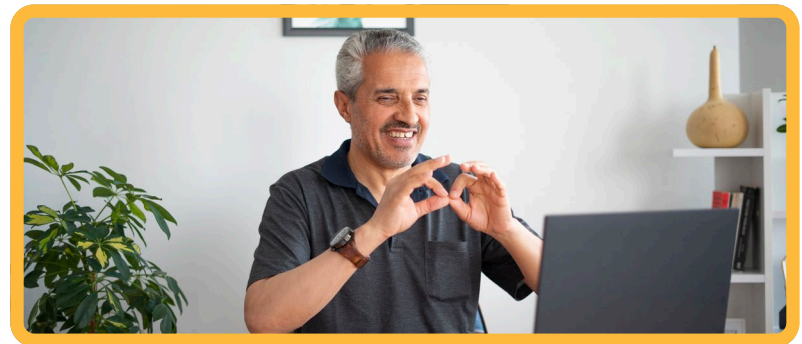
- Your money and things you own should be below certain amounts set by the rules. That is, your income can be up to three times the current Federal Poverty Level (FPL), and you can have things that are worth up to \$15,000.



» What if I am on the waiting list for an HCBS waiver?

- If you are on a waiver wait list, you will stay on the wait list while in Working Healthy. You may also qualify for WORK services and continue to move up on the wait list.
- If you are offered waiver services while in Working Healthy only you can choose between moving to the waiver.

- If you are on a waiver and want to enroll in Working Healthy and possibly WORK.
- If you are on a waiver and want to enroll in Working Healthy only, your waiver spot will not be protected, and you will not be able to move back to the waiver.



» How does Working Healthy affect other programs, like Medicare?

- If you have Medicare, you can also get Working Healthy to help pay for medical bills.
- If you get Supplemental Security Insurance (SSI) cash benefits, you already have medical benefits through KanCare.

- Even if you start making money and stop getting Supplemental
- Security Insurance (SSI) payments, you might still get KanCare.
- If you lose your Supplemental Security Insurance (SSI) cash benefits, you can apply for Working Healthy.

» How do I get Working Healthy?

- Talk to a Benefits Specialist about your needs and how to sign up. The Benefits Specialist will also help you get started with services.



» What are Premiums?

People who make more money may be charged a monthly premium for their health insurance coverage under Working Healthy. The amount of your premium is based on how much money you make. For more information about Working Healthy premiums go to:

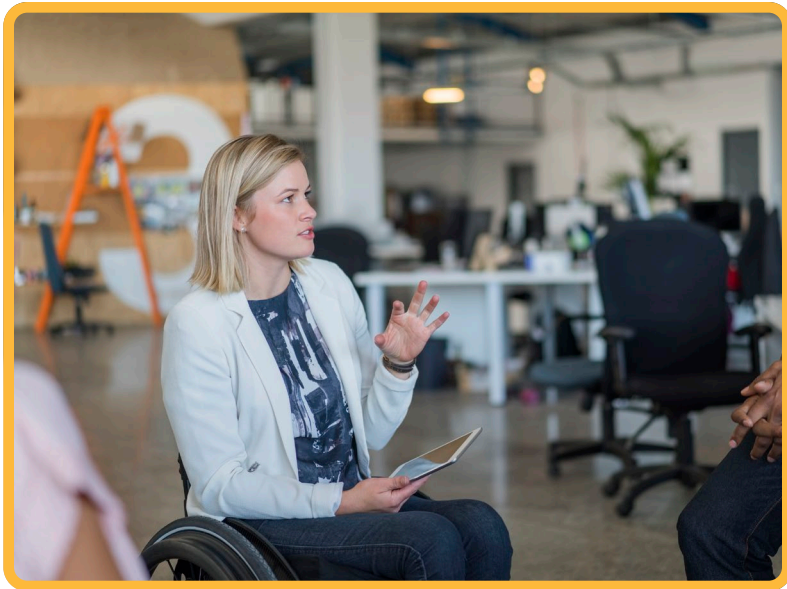
https://content.dcf.ks.gov/ees/keesm/Forms/ES-3165_WorkingHealthyPremiums_05_12.pdf

If you have questions about premiums, talk to a Working Healthy Benefits Specialist



» What if I lose my job?

If you lose your job, you need to tell your Working Healthy Benefits Specialist within 10 days. Your Working Healthy Benefits Specialist will talk to you about your options, like a temporary unemployment plan. If lose Working Healthy, your Benefits Specialist will talk with you about your options.



» Who do I contact if I have questions?

- Your Working Healthy Benefits Specialist is the best person to contact for any questions. To find your Benefits Specialist go to:

([Kancare.ks.gov/benefits-specialists](https://kancare.ks.gov/benefits-specialists)).

or scan the QR code below to get contact information about the Benefits Specialists.



- You can also contact the Working Healthy Senior Manager, Billie Crawshaw. You can email Billie at billie.crawshaw@ks.gov or call 785-625-4005.

» What are my Rights?

- You have a right to information that helps you make choices about the Working Healthy Program.
- You have a right to know and understand what services you get.
- You have a right to file a complaint or appeal if you have problems with Working Healthy. For help with appeals and state fair hearings:

- » [Kancare.ks.gov/members/help-resources](https://kancare.ks.gov/members/help-resources)
- » [Kancare.ks.gov/members/help-resources/kancare-ombudsman](https://kancare.ks.gov/members/help-resources/kancare-ombudsman)
- » [Kancare.ks.gov/appeals-fair-hearings](https://kancare.ks.gov/appeals-fair-hearings).
- » [Kancare.ks.gov/members/help-resources/appeals-fair-hearings/state-fair-hearings](https://kancare.ks.gov/members/help-resources/appeals-fair-hearings/state-fair-hearings)

- You will not lose Working Healthy services without getting a notice of action.

» What are my responsibilities?

- You need to follow the Working Healthy program rules in this Member Handbook. These rules will be talked about when you enroll and when you do your annual participant agreement.
- You need to give Kansas Department of Health and Environment (KDHE) staff the paperwork needed for your annual eligibility and six-month reviews. If you do not do this paperwork, your Working Healthy services may end.



- You need to tell your Working Healthy Benefits Specialist when you are not working.
- You need to tell your Working Healthy Benefits Specialist and Managed Care Organization (MCO) Care Coordinator/ Case Manager, if you want to leave Working Healthy and go to an HCBS waiver or another program.
- If you become verbally or physically abusive, profane, bully, or sexually harass someone helping you with Working Healthy, you can lose your services.



» Who can help me and answer questions about Working Healthy?

- **Working Healthy Benefits Specialists:** These specialists are here to help you understand how working might change your government benefits like SSI or SSDI. They answer questions about your job and benefits, help you sign up for services, and support you if you lose your job. You can find out who your local Benefits Specialist is by checking the Benefits Specialist Regional Map :

([Kancare.ks.gov/benefits-specialists](https://kancare.ks.gov/benefits-specialists)).

- You can also scan the QR code to get information about Benefits Specialists.



